

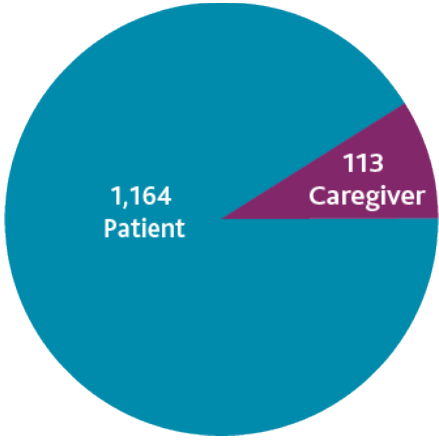
Van: Lymphoma Coalition <marketing@lymphomacoalition.org>
Verzonden: vrijdag 9 februari 2024 18:33
Aan: elke.stienissen@lymfklierkanker.be
Onderwerp: Week One Update: 2024 Global Patient Survey



The Global Patient Survey on Lymphomas & CLL

Week One Update

We are pleased to report that since the survey opened on 2 February, a total of **1,277** responses to the 2024 Global Patient Survey on Lymphomas & CLL have been submitted. Below is a breakdown of survey responses by respondent type.



We want to thank you all for your enthusiasm in helping to spread the word about the survey. This strong start is a direct result of your hard work and we encourage this

excitement as it will be essential in keeping the momentum going over these next two months!

As many of you are aware, our goal of the survey is to truly understand the current voices and values of adult patients and caregivers and to do this we need to hear from as many people as possible from around the world. This will ensure those impacted by lymphoma and CLL are accurately represented in the work we do moving forward, to improve care across the globe.

What's Next?

- Please continue using the materials to help share the news about the survey with your communities and encourage them to take the time to complete it.
- Materials in other languages:
 - We welcome any additional translation requests for the infographics. If you are interested in having this done, please contact us at: marketing@lymphomacoalition.org.
 - We have had the five (5) social media tiles which are currently available [here](#), in English, translated into the 19 other languages. We will add these to each individual toolkit so you have all translated materials available in one folder. These will be available soon, please stay tuned for a detailed update next week!

If you have any questions at all about the materials or need help with your username and password, please contact marketing@lymphomacoalition.org.

Here is the link directly to the survey, so you can easily share:
<https://bit.ly/LCGPS2024>

Survey Responses: By Member Countries Week One

Please note this breakdown is based on the data pulled on 09 February 2024 at 11:00 AM EDT.

	Country/ Region	Responses
	United States of America	335
	United Kingdom of Great Britain and Northern Ireland	124
	Italy	105
	Belgium	91
	Canada	80
	Slovakia	67
	Bulgaria	66
	Argentina	59
	Germany	57
	Ireland	51
	Serbia	32
	Israel	28
	Portugal	28
	Finland	23

A reminder that the country reports will be created for countries who have surpassed 100 patient respondents. The country report will highlight the findings, which can be used for local planning to help ensure activities align with patients' needs, as well as advocacy efforts. In addition, Lymphoma Coalition can support your organisation with data needed for therapy approvals.

Currently, there are **707 partially-completed surveys**. If respondents use the same browser and have cookies enabled, responses to date will have been saved and they can pick up where they left off and complete the survey.

Survey Responses: By Subtypes

The highlighted subtypes have surpassed 100 respondents and will have a subtype report.

Subtype	Count
Adult T-cell	3
Anaplastic Large Cell	3
Angioimmunoblastic T-cell	1
Burkitt's	12
Chronic Lymphocytic Leukaemia (CLL) / Small Lymphocytic Lymphoma (SLL)	346
Cutaneous	6
Double hit / triple hit B-cell	3
Follicular	118
Hairy Cell	4
Hodgkin	149
Large B-Cell	10
Mantle Cell	27
Marginal Zone (Nodal type)	6
Marginal Zone (Splenic type)	8

Friendly Reminders:

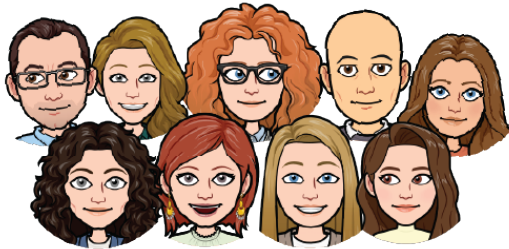
1. Please host the GPS promotional information on your website.
2. Send an email to your membership, sponsors and other partners encouraging them to take the survey and pass the message along!
3. Share with your followers on social media.

We greatly appreciate your support in helping to promote participation in the 2024 Global Patient Survey.

By working together, we will ensure those impacted by lymphoma are given the opportunity to share feedback about their experience and help shape the global lymphoma landscape.

With deepest thanks,

Lymphoma Coalition Team



[View email in browser](#)

Lymphoma Coalition · 8 Stavebank Rd. · Unit #401 · Mississauga, On L5G 2T4 · Canada
[update your preferences](#) or [unsubscribe](#)

